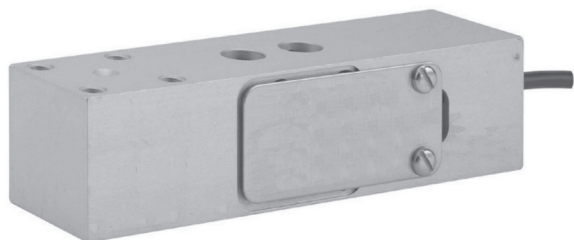


## Low Cost Single point Load Cell



Model 1241 is a low Profile, three beam, single point load cell ideally suited to industrial applications where space is limited. Typical applications include platforms, hanging scales and personal weighers.

This high accuracy load cell is Factory Mutual and OIML class C3 approved.

A special Humidity resistant protective coating assures long term stability over the entire compensated temperature

### FEATURES

- Capacities 50 - 250kg
- Aluminum construction
- Single point - 400 x 400mm platform
- 6 wire (sense) circuit
- IP54 protection (IP67 optional)

range. For washdown protection an optional IP67 encapsulation protection is available.

The two additional sense wires feed back the voltage reaching the load cell. Complete compensation of changes in lead resistance due to temperature change and/or cable extension, is achieved by feeding this voltage into the appropriate electronics.

SPECIFICATIONS					
GRADE	Z	E	F	C3**	UNITS
Rated Capacities	50, 100, 150, 200, 250				kg
Rated Output	2.0 ± 10%				mV/V
Total Error*	0.075	0.030	0.020	0.020	± % of applied load
Zero Return after 30 mins	0.065	0.050	0.025	0.017	± % of applied load
Temperature Effect: On Output On Zero	0.0070	0.0030	0.0014	0.0010	± % of applied load/°C
	0.025	0.0100	0.0060	0.0040	± % of rated output/°C
Eccentric Loading	0.015	0.0074	0.0074	0.0049	± % of applied load/cm
Zero Balance	10.0				± % of rated output
Temperature Range: Operating Compensated	- 30 to + 70				°C
	- 10 to + 40				°C
Safe Overload	150				% of rated capacity
Ultimate Overload	300				% of rated capacity
Excitation: Recommended Maximum	10				Volts AC or DC
	15				
Input Impedance	415 ± 15				Ohms
Output Impedance	350 ± 3				Ohms
Insulation Impedance	> 2000				MegaOhms
Deflection at Rated Capacity	< 0.4				mm
Weight: All Types	1.8				kg
Construction	Standard: Anodized Aluminum, Low Cost: Aluminum				
Environmental Protection	Standard: IP54 (IP67 optional), Low Cost: IP55				
Cable	1 Meter (Standard), 6 Wire, Polyurethane Jacket, Dual Floating Screen				

\*Total Error - According to OIML R60

\*\*Standard 85% utilization - other utilization factors available on request.

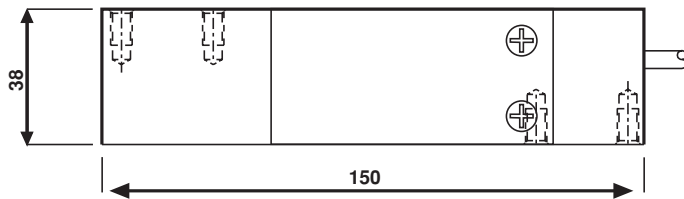
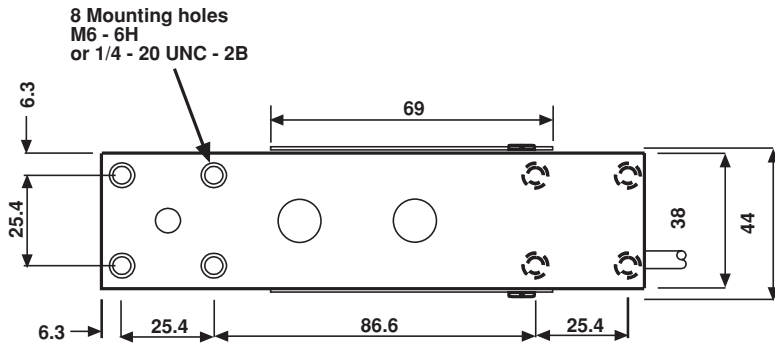
# Model 1241

Tedea-Huntleigh



## Low Cost Single Point Load Cell

**DIMENSIONS** in millimeters



Wiring Schematic Diagram

