

Single-Point Load Cell

FEATURES

- Capacities: 6–60 kg
- Fully welded, stainless steel construction
- Hermetically sealed, IP66 and IP68
- Certified to OIML R-60, 3000d
- Comprehensive mounting hole facility
- Moment insensitive, platform size to 350 x 350 mm
- **Optional**
 - ATEX and FM certified versions are available for use in potentially explosive atmospheres
 - IP69K full hermetic construction with true glass to metal seal



APPLICATIONS

- Food platforms
- Process weighing
- Multi-head packaging machines
- Marine hybrid scales

This product is suitable for low capacity platform scales, multi-head packaging machines, check weighers, loss-in-weight feeders, belt scales, and general process weighing applications.

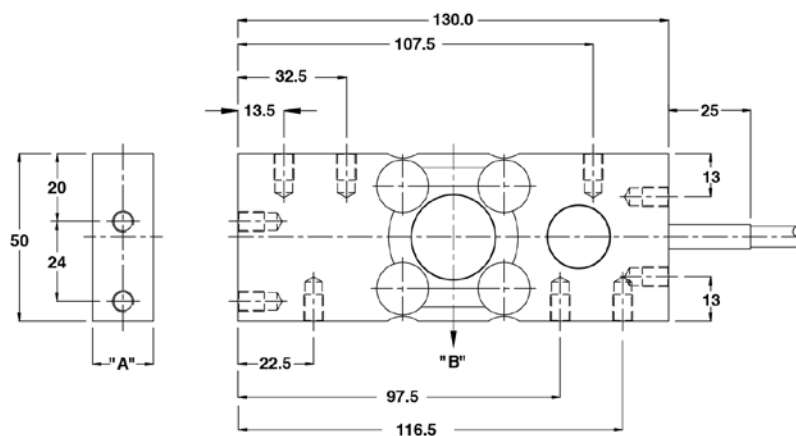
DESCRIPTION

The HPS is a unique fully welded all stainless steel single point (moment insensitive) load cell.

The unique construction ensures that this product can be used successfully in harsh environments found in the food, chemical, and allied industries.

This product meets the stringent Weights and Measures requirements throughout Europe.

OUTLINE DIMENSIONS in millimeters



Cable specifications

Cable length: 7m

Excitation +	Green
Excitation -	Black
Output +	White
Output -	Red
Sense +	Yellow
Sense -	Blue
Shield	Transparent

Cable screen is not connected to the load cell body.

Capacity (kg)	6, 12, 30	60
A	18.5	23.5
B	Central load axis	
Max. recommended platform size 350 mm		
All threads M6x1 (8 Deep)		

Single-Point Load Cell

SPECIFICATIONS			
PARAMETER	VALUE		UNIT
Standard capacities (E_{max})	6, 12, 30, 60		kg
Accuracy class according to OIML R-60	Non-Approved	C3	
Max. no. of verification intervals	3000		
Min. verification interval (V_{min})	$E_{max}/12000$		
Rated output (=S)	2		mV/V
Rated output tolerance	0.2		±% mV/V
Zero balance	1.0		±% FSO
Combined error	0.0500	0.0200	±% FSO
Non-repeatability	0.0200	0.0100	±% FSO
Minimum dead load output return	0.0500	0.0167	±% applied load
Creep error (30 minutes)	0.0600	0.0245	±% applied load
Temperature effect on min. dead load output	0.0250	0.0058	±% FSO/5°C (°F)
Temperature effect on sensitivity	0.0250	0.0045	±% applied load/5°C (°F)
Eccentric load effect*	0.03		±% FSO
Minimum dead load	0		% E_{max}
Maximum safe overload	150		% E_{max}
Ultimate overload	300		% E_{max}
Maximum safe side load	100		% E_{max}
Deflection at E_{max}	0.24±0.02 / 0.19±0.01 / 0.15±0.01 / 0.22±0.03		mm
Excitation voltage	5 to 12		V
Maximum excitation voltage	15		V
Input resistance	400±6	400±6	Ω
Output resistance	350±7		Ω
Insulation resistance	≥5000		MΩ
Compensated temperature range	-10 to +40		°C
Operating temperature range	-40 to +80		°C
Storage temperature range	-40 to +90		°C
Element material (DIN)	Stainless steel 1.4542		
Sealing (DIN 40.050 / EN60.529)	IP66 and IP68		
Recommended torque on fixation bolts	6		N*m

* Applies at 50% x Rated Load at 150 mm radius

All specifications subject to change without notice.