

Compression Load Cells

FEATURES

- Capacity range: 500, 1K, 2K, 3K, 5K, 10K, 20K, 50K, and 100K lb (227, 454, 907, 1.4K, 2.27K, 4.54K, 9K, 13.6K, 22.7K, and 45.4K kg)
- Environmentally sealed
- Operational: -30° to +175°F
- Low deflection
- Compact and rugged
- FM and CSA approved (NTEP Certificate of Conformance for Class III Scale Applications—20K to 100K)

APPLICATIONS

- Test and measurement
- Calibration standards
- Redundant weighing systems

DESCRIPTION

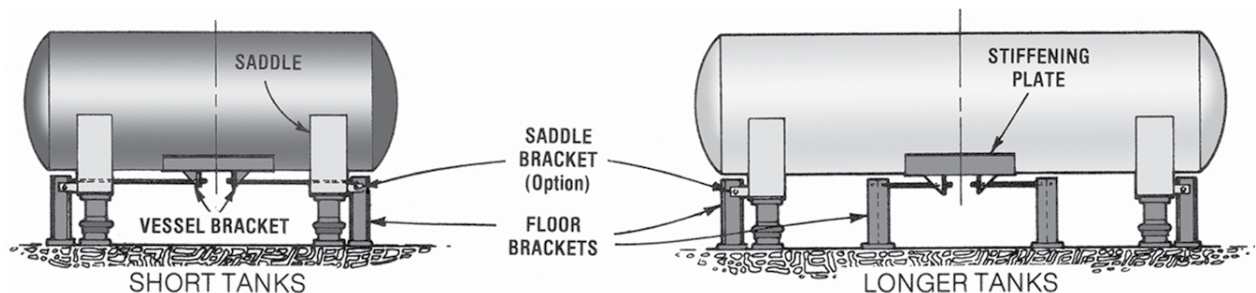
C3P1 and C3P2 cells are fabricated with high strength 'ring' type elements to provide an output signal of 3 mV/V at rated capacity. Each cell is designed for minimum deflection and 150% safe overload without damage. C3P2 cells contain a second bridge. The second bridge can be used simultaneously with the first bridge for dual output or be reserved as a backup in case of failure in the first bridge. Double diaphragm fabrication offers precision



performance and long term reliability. Low deflection and superior sealing guarantee trouble-free operation.

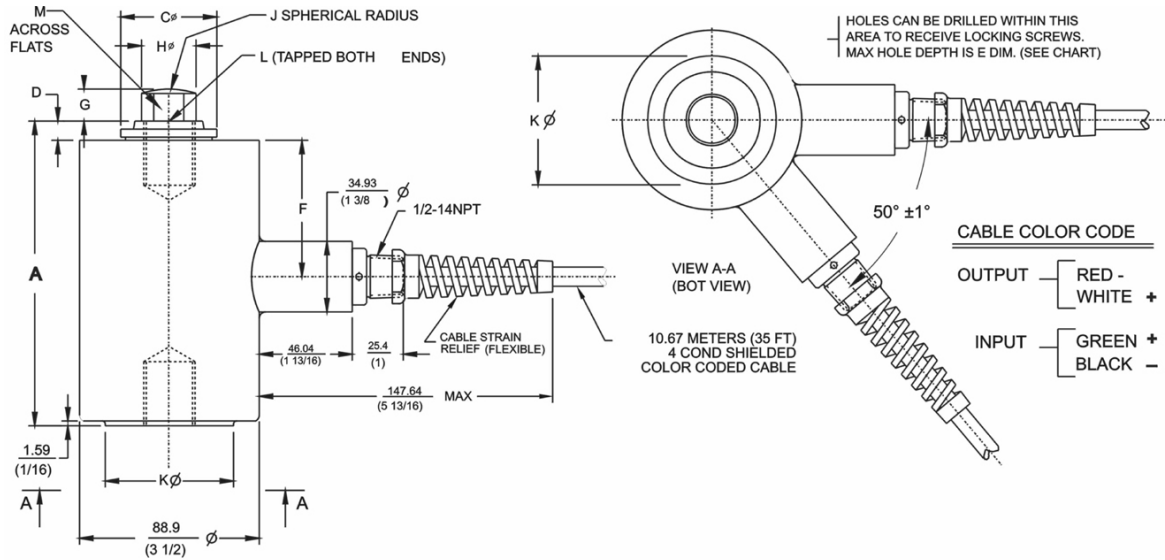
Relatively low mass and small deflection under load, produce excellent frequency response. Overall, C3P1/C3P2 cells perform superbly in many environments where other transducers cannot.

CONFIGURATION



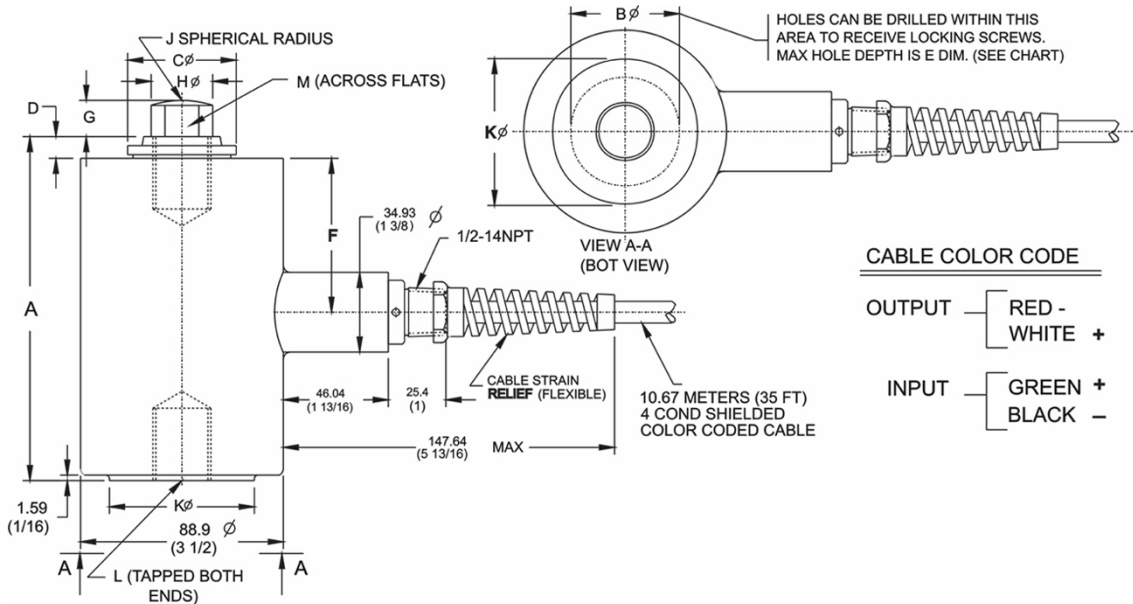
Compression Load Cells

OUTLINE DIMENSIONS—DOUBLE BRIDGE—500 TO 10K POUNDS



CAP.	KILOGRAMS (POUNDS)	A	B φ	C φ	D	E	F φ	G	H φ	J	K φ	L (TAPPED)	M
227 (500)	THRU 1361 (3000)	115.89 (4 9/16)	—	26.99 (1 1/16)	6.35 (1/4)	—	57.15 (2 1/4)	9.53 (3/8)	16 (5/8)	50.8 (2)	31.75 (1 1/4)	1/2-20UNF-2B X 1/2 DP	9.53 (3/8)
2268 (5000)	& 4536 (10000)	150.81 (5 15/16)	44.45 (1 3/4)	47.63 (1 7/8)	9.53 (3/8)	12.7 (1/2)	67.47 (2 21/32)	16 (5/8)	26.99 (1 1/16)	101.6 (4)	63.5 (2 1/2)	1-14UNS-2B X 1 1/4 DP	22.35 (7/8)

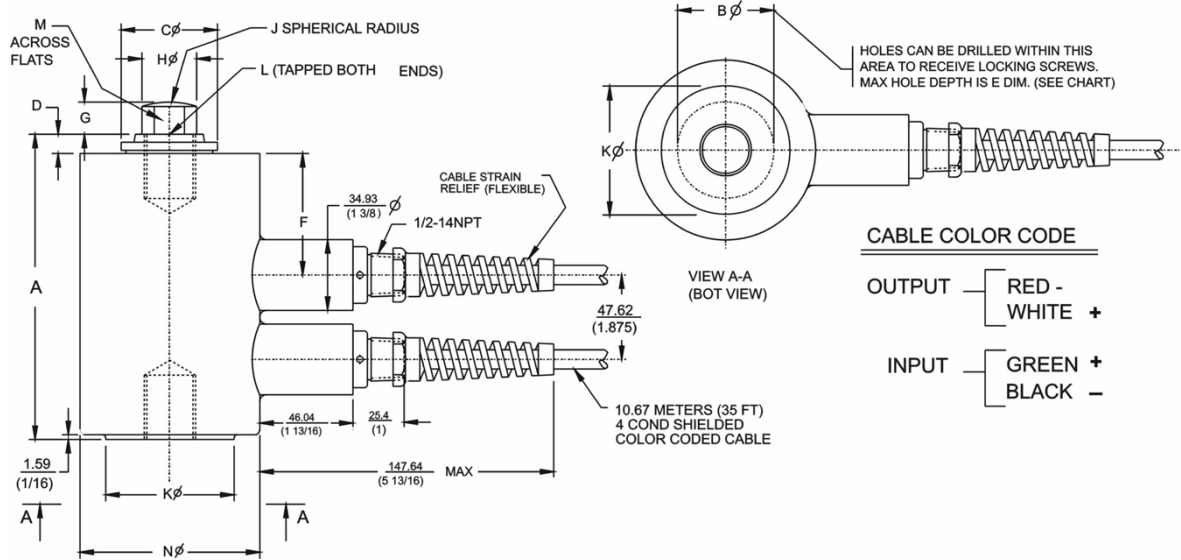
OUTLINE DIMENSIONS—SINGLE BRIDGE—500 TO 10K POUNDS



CAP.	KILOGRAMS (POUNDS)	A	B φ	C φ	D	E	F φ	G	H φ	J	K φ	L (TAPPED)	M
227 (500)	THRU 1361 (3000)	115.89 (4 9/16)	—	26.99 (1 1/16)	6.35 (1/4)	—	57.15 (2 1/4)	9.53 (3/8)	16 (5/8)	50.8 (2)	31.75 (1 1/4)	1/2-20UNF-2B X 1/2 DP	9.53 (3/8)
2268 (5000)	& 4536 (10000)	150.81 (5 15/16)	44.45 (1 3/4)	47.63 (1 7/8)	9.53 (3/8)	12.7 (1/2)	67.47 (2 21/32)	16 (5/8)	26.99 (1 1/16)	101.6 (4)	63.5 (2 1/2)	1-14UNS-2B X 1 1/4 DP	22.35 (7/8)

Compression Load Cells

OUTLINE DIMENSIONS - DOUBLE BRIDGE - 20K TO 50K POUNDS

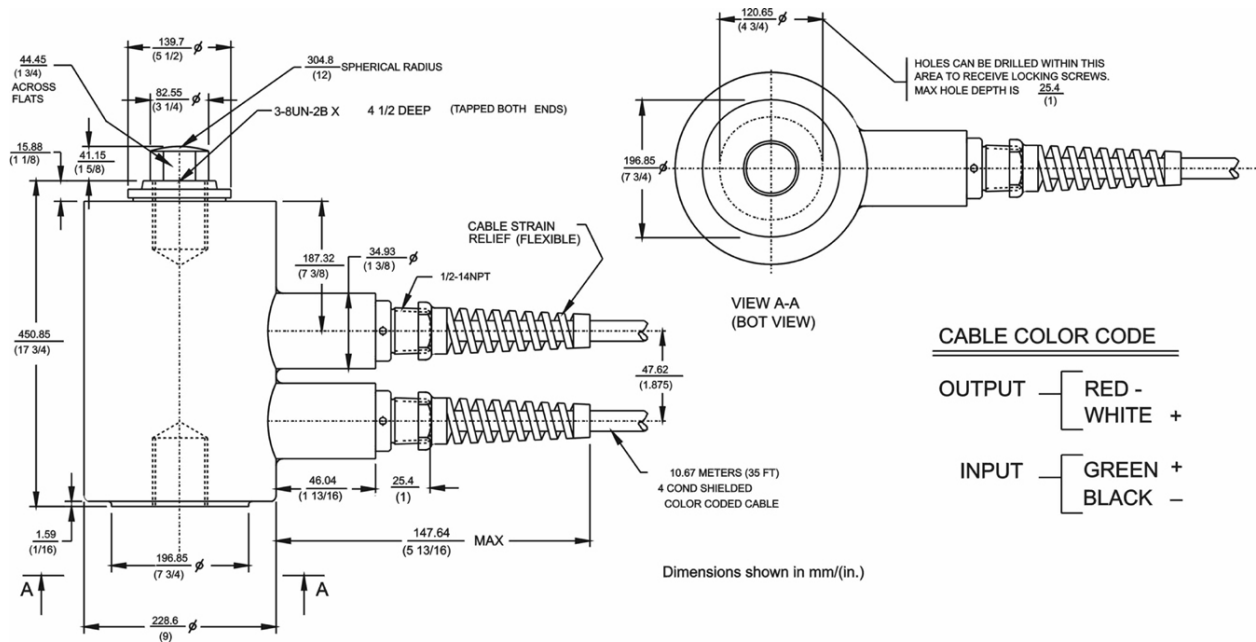


CABLE COLOR CODE

OUTPUT — RED - WHITE +
INPUT — GREEN + BLACK -

CAP.	KILOGRAMS (POUNDS)	A	B ϕ	C ϕ	D	E	F	G	H ϕ	J	K ϕ	L (TAPPED)	M	N ϕ
9072	THRU 13608	215.9	66.68	69.85	12.7	25.4	86.52	25.00	41.28	203.2	101.6	1 1/2-12UNF-2B X	31.75	127.0
(20,000)	(30,000)	(8 1/2)	(2 5/8)	(2 3/4)	(1/2)	(1)	(3 13/32)	(63/64)	(1 5/8)	(8)	(4)	1 3/4 DEEP	(1 1/4)	(5)
22680		290.51	95.25	101.6	15.88	25.4	113.50	25.00	57.15	203.2	146.05	2-12UN-2B X	44.45	165.1
(50,000)		(11 7/16)	(3 3/4)	(4)	(5/8)	(1)	(4 15/32)	(63/64)	(2 1/4)	(8)	(5 3/4)	2 1/4 DEEP	(1 3/4)	(6 1/2)

OUTLINE DIMENSIONS - DOUBLE BRIDGE - 100K POUNDS



CABLE COLOR CODE

OUTPUT — RED - WHITE +
INPUT — GREEN + BLACK -

Dimensions shown in mm/(in.)

Compression Load Cells

SPECIFICATIONS			
PARAMETER		VALUE	
PERFORMANCE			
Capacities	500, 1K, 2K, 3K, 5K, 10K, 20K, 50K, and 100K lb (227, 454, 907, 1.4K, 2.27K, 4.54K, 9K, 13.6K, 22.7K, and 45.4K kg)		
Rated output (RO)	3.0 mV/V (±0.10%)		
Repeatability	0.02% RO		
Combined error	0.10% RO (500 lb)	0.07% RO (1K–100K lb)	
Zero balance	1.0% RO		
Creep (20 minutes)	0.03% RO		
Temperature effects on zero balance	0.0015% RO/°F		
Temperature effects on rated output	0.0008% Load/°F		
ELECTRICAL			
Recommended excitation	10 VAC-DC		
Input resistance	350 Ω (±3.5)		
Output resistance	350 Ω (±3.5)		
Cable length	35 ft cable		
Number of bridges	single or double		
TEMPERATURE			
Safe range	–30°F to +175°F		
Compensated range	+30°F to +130°F		

PARAMETER		VALUE	
ADVERSE LOAD RATINGS			
Safe overload	150% rated capacity		
Ultimate overload	300% rated capacity		
MATERIAL			
Element	High grade tool steel		
Cannister	Low carbon steel, painted*		
SEALING			
Environmental class	IP67		
DEFLECTION			
500 lb	0.007 in		
1K lb	0.006 in		
2K, 3K lb	0.005 in		
5K lb	0.007 in		
10K lb	0.005 in		
20K lb	0.007 in		
50K lb	0.010 in		
100K lb	0.013 in		

* Single component, waterborne polyurethane copolymer—high gloss.

BLH Nobel is continually seeking to improve product quality and performance. Specifications may change accordingly.