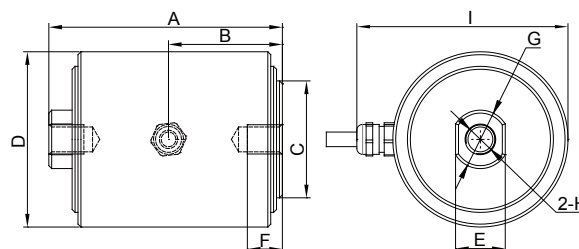


CP1

Canister Load Cells



Specifications

Rated Output(mV/V):
2.0±0.05

Nonlinearity:
±0.03%FS

Creep(30min.):
±0.03%FS

Insulation Resistance:
≥5000M ohms

Temperature:
Compensated Range
-10°C~+40°C

Temp. Effect on Zero:
≤0.002%FS/°C

Zero Balance:
±1%FS

Hysteresis:
±0.03%FS

Input Resistance:
387±20 ohms

Excitation Voltage:
5~10V DC(15V MAX)

Temperature:
Operating Range
-10°C~+70°C

Temp. Effect on Output:
≤0.002%FS/°C

Safe Overload:
150%

Repeatability:
±0.03%FS

Output Resistance:
350±5 ohms

Material:
Alloy Steel/Aluminum alloy

Cable Length:
2.75m

IP Class :
IP66

Cable Color Code:
Red..... + EXC
Black..... - EXC
Green..... + SIG
White..... - SIG

Dimensions

RATED CAPACITY	A	B	C	D	E	F	G	H	I
kg/mm									
5~500	80	39	Ø40	Ø60	17	12	Ø20	M10x1.5	77
1000~5000	120	54	Ø40	Ø60	30	20	Ø36	M20x1.5	77
N/mm									
50~5000	80	39	Ø40	Ø60	17	12	Ø20	M10x1.5	77
10k~50k	120	54	Ø40	Ø60	30	20	Ø36	M20x1.5	77

Order Information

LOAD RATING	
CP1-5kg(50N)	CP1-10kg(100N)
CP1-20kg(200N)	CP1-50kg(500N)
CP1-100kg(1000N)	CP1-200kg(2000N)
CP1-250kg(2500N)	CP1-500kg(5000N)
CP1-1t(10kN)	CP1-2t(20kN)
CP1-3t(30kN)	CP1-5t(50kN)

Interchangeable Products

MANUFACTURER	MODEL
NTS	LTM/LTR
NMB	CCP1
TRANSCCELL	CR