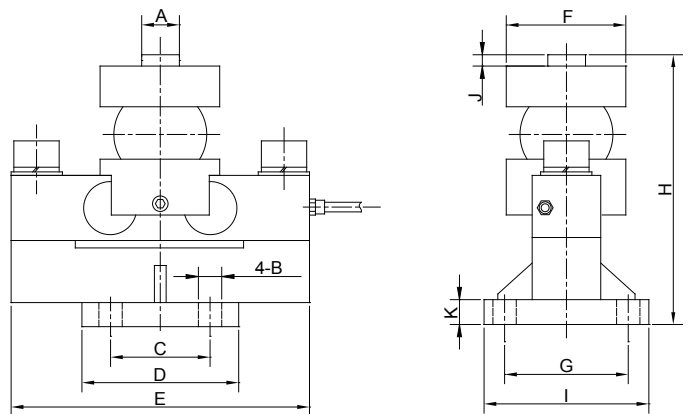


CPMDB

Canister Load Cells



Specifications

Rated Output(mV/V):

2.0±0.005

Nonlinearity:

±0.03%FS

Creep(30min.):

±0.02%FS

Insulation Resistance:

≥5000M ohms

Temperature:

Compensated Range

-10°C~+50°C

Temp. Effect on Zero:

≤0.002%FS/°C

Zero Balance:

±1%FS

Hysteresis:

±0.03%FS

Input Resistance:

770±5 ohms

Excitation Voltage:

5~10V DC(15V MAX)

Temperature:

Operating Range

-20°C~+60°C

Temp. Effect on Output:

≤0.002%FS/°C

Safe Overload:

120%

Repeatability:

±0.01%FS

Output Resistance:

700±3 ohms

Material:

Alloy Steel

Cable Length:

12m

IP Class:

IP67

Cable Color Code:

Red..... + EXC

Black..... - EXC

Green..... + SIG

White..... - SIG

Dimensions

RATED CAPACITY	A	B	C	D	E	F	G	H	I	J	K
t/mm											
10~30	Ø30	Ø18	80	125	240	Ø97	100	230	135	11	20
40~50	Ø40	Ø21	124	160	340	Ø97	124	251.3	160	11	20

Order Information

LOAD RATING	
CPMDB-10t	CPMDB-20t
CPMDB-25t	CPMDB-30t
CPMDB-40t	CPMDB-50t

Interchangeable Products

MANUFACTURER	MODEL
VISHAY Celtron	MDB