

## Model CSDKA Series

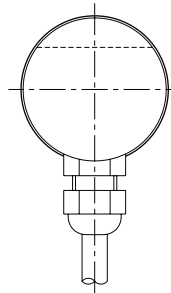
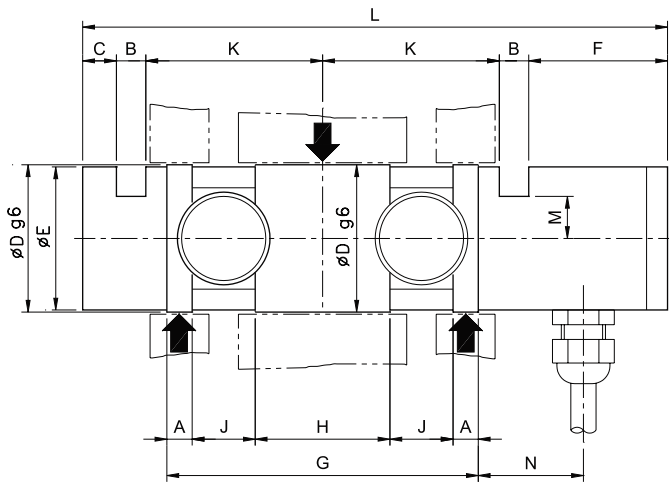
Pin Type Load Cell(2t ~ 50t)

- Robust high capacity design
- Alloy tool steel construction
- Electroless nickel plated for corrosion resistance
- Fully sealed to IP67



### SPECIFICATIONS

MODEL	CSDKA
Rated capacity (R.C.)	2, 3, 5, 10, 20, 30, 50t
Rated output(R.O.)	1.5mV/V ± 0.5%
Non-linearity	≤ 0.5% R.O.
Hysteresis	≤ 0.5% R.O.
Non-repeatability	≤ 0.1% R.O.
Creep error	≤ 0.05% in 20min.
Zero balance	≤ 1% R.O.
Compensated temperature range	-10 ~ 70°C
Operating temperature range	-20 ~ 80°C
Temp. effect on rated output	≤ 0.05% LOAD/10°C
Temp. effect on zero balance	≤ 0.05% R.O./10°C
Terminal input resistance	700 Ohms ± 10 Ohms
Terminal output resistance	700 Ohms ± 10 Ohms
Insulation resistance (Min.)	2000 MOhms at 50V DC
Excitation voltage	10V(Recommended), 15V(Max.)
Electrial connection	ø7mmx6m(22AWG x 4Core Shielded)
Protection class	meets IP 67
Safe overload	150% R.C
Ultimate overload	300% R.C



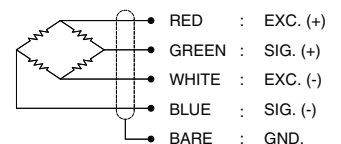
### ORDERING INFORMATION

**CSDKA - 2T**

MODEL  
CSDKA

CAPACITY  
2, 3, 5, 10, 20, 30, 50t

### WIRING INFORMATION



### Dimension-mm

Capacity	A	B	C	D	E	F	G	H	J	K	L	M	N	Weight(kg)
2 ton (19.61kN)	6	7	8	35	34	33	74	32	15	42	139	10	25	1.1
3, 5 ton (29.42, 49.06kN)	8	7	8	40	39	38	85	32	17	50	160	12	25	1.6
10 ton (98.07kN)	10	9	8	50	48	51	110	46	22	64	205	15	40	2.4
20 ton (196.1kN)	14	14	11	70	68	46	152	64	30	85	255	23	40	7.7
30 ton (294.2kN)	17	14	12	85	83	46	186	78	37	102	290	28	40	12.9
50 ton (490.6kN)	21	18	16	105	103	48	230	96	46	129	356	36	61	23.2

\* Specifications are subject to change without notice

JAN, 2010