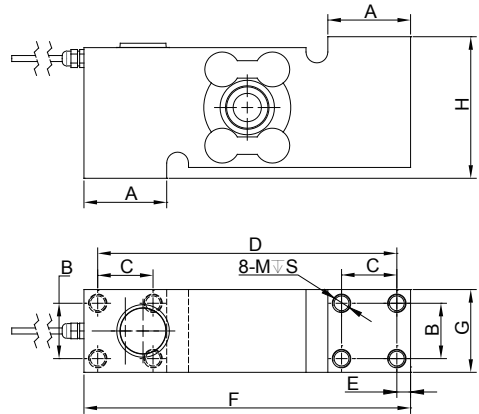


FSSH

Single Point Load Cells



Specifications

Rated Output(mV/V): 2.0±0.002	Zero Balance: ±1%FS	Safe Overload: 150%	Cable Length: 2.5m
Nonlinearity: ±0.017%FS	Hysteresis: ±0.017%FS	Repeatability: ±0.03%FS	IP Class: IP68
Creep(30min.): ±0.017%FS	Input Resistance: 381±4 ohms	Output Resistance: 350±1 ohms	Cable Color Code: Red..... + EXC Black..... - EXC Green..... + SIG White..... - SIG
Insulation Resistance: ≥5000M ohms	Excitation Voltage: 5~15V DC(20V MAX)	Material: Stainless steel	
Temperature: Compensated Range -10°C~+40°C	Temperature: Operating Range -10°C~+65°C		
Temp. Effect on Zero: ≤0.002%FS/°C	Temp. Effect on Output: ≤0.002%FS/°C		

Dimensions

RATED CAPACITY	A	B	C	D	E	F	G	H	M	S
kg/mm										
50~500	38	25.4	25.4	137.4	6.3	150	38	65	M8	20

Order Information

LOAD RATING	
FSSH-50kg	FSSH-100kg
FSSH-200kg	FSSH-300kg
FSSH-500kg	

Interchangeable Products

MANUFACTURER	MODEL
METTLER TOLEDO	SSH