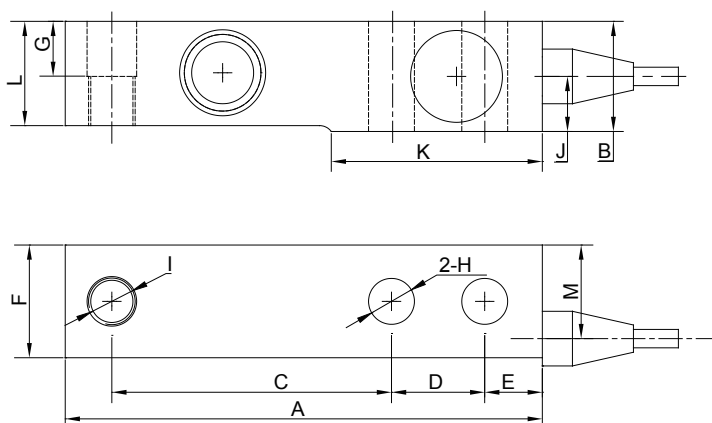


# SBSS

## Single-Ended Beam Load Cells



## Specifications

**Rated Output(mV/V):**  
2.0±0.002

**Nonlinearity:**  
±0.03%FS

**Creep(30min.):**  
±0.03%FS

**Insulation Resistance:**  
≥5000M ohms

**Temperature:**  
Compensated Range  
-10°C~+40°C

**Temp. Effect on Zero:**  
≤0.002%FS/°C

**Zero Balance:**  
±1%FS

**Hysteresis:**  
±0.02%FS

**Input Resistance:**  
387±20 ohms

**Excitation Voltage:**  
5~10V DC(15V MAX)

**Temperature:**  
Operating Range  
-10°C~+70°C

**Temp. Effect on Output:**  
≤0.002%FS/°C

**Safe Overload:**  
150%

**Repeatability:**  
±0.03%FS

**Output Resistance:**  
350±5 ohms

**Material:**  
Stainless steel

**Cable Length:**  
6m

**IP Class :**  
IP68

**Cable Color Code:**  
Red..... + EXC  
Black..... - EXC  
Green..... + SIG  
White..... - SIG

## Dimensions

RATED CAPACITY	A	B	C	D	E	F	G
<b>kg/mm</b>							
113.5(250lb)	130	30	76.2	25.4	15.7	30.7	15
250~2500	130	30	76.2	25.4	15.7	30.7	15
2500~7500	171.5	36.5	95.3	38.1	19.1	36.5	17.5

RATED CAPACITY	H	I	J	K	L	M
<b>kg/mm</b>						
113.5(250lb)	Ø13.5	1/2"-20 UNF	15.8	57.5	28.4	24.7
250~2500	Ø13.5	M12x1.75	15.8	57.5	28.4	24.7
2500~7500	Ø19.8	M18x1.5	19.5	76.2	34	30.7

## Order Information

LOAD RATING	
SBSS-250lb	SBSS-250kg
SBSS-500kg	SBSS-1t
SBSS-1.5t	SBSS-2t
SBSS-2.5tS	SBSS-2.5t
SBSS-5t	SBSS-7.5t

## Interchangeable Products

MANUFACTURER	MODEL
TRANSCCELL	SBSB