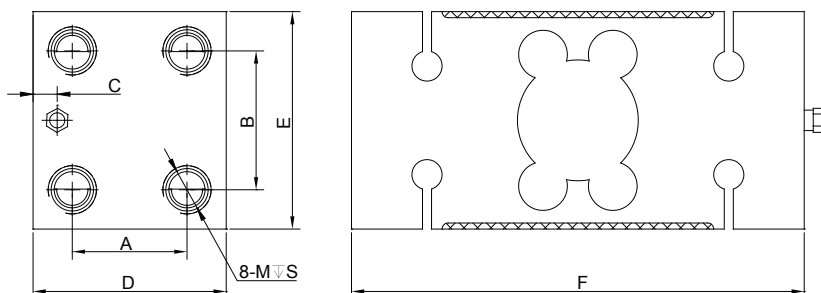
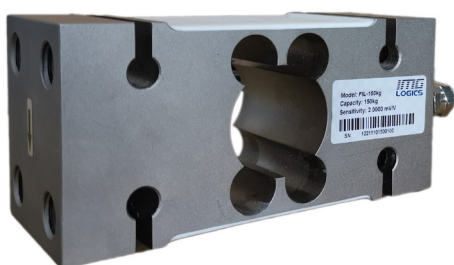


FIL

Single Point Load Cells



↓

Specifications

Rated Output(mV/V):
2.0±0.002

Nonlinearity:
±0.02%FS

Creep(30min.):
±0.02%FS

Insulation Resistance:
≥5000M ohms

Temperature:
Compensated Range
-10°C~+40°C

Temp. Effect on Zero:
≤0.002%FS/°C

Zero Balance:
±1%FS

Hysteresis:
±0.02%FS

Input Resistance:
380±15 ohms

Excitation Voltage:
5~15V DC(20V MAX)

Temperature:
Operating Range
-40°C~+65°C

Temp. Effect on Output:
≤0.002%FS/°C

Safe Overload:
150%

Repeatability:
±0.01%FS

Output Resistance:
350±1 ohms

Material:
Alloy steel

Cable Length:
6m

IP Class:
IP67

Cable Color Code:
Red..... + EXC
Black..... - EXC
Green..... + SIG
White..... - SIG

Dimensions

RATED CAPACITY	A	B	C	D	E	F	M	S
kg/mm								
150~1000	38	46	8	64	72	150	M14	25

Order Information

LOAD RATING	
FIL-150kg	FIL-250kg
FIL-500kg	FIL-1000kg

Interchangeable Products

MANUFACTURER	MODEL
METTLER TOLEDO	IL