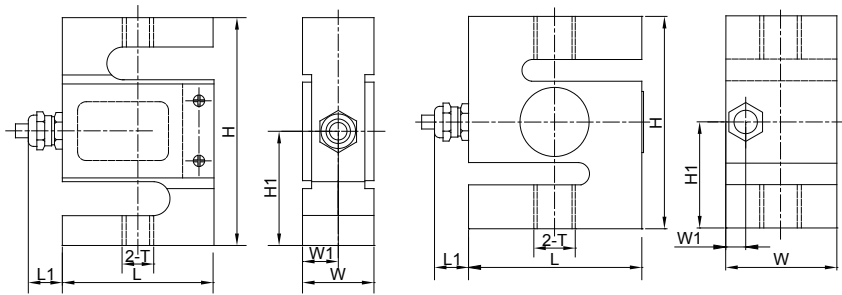


STSC/STSB

S-Beam Load Cells



STSC

STSB



Specifications

Rated Output(mV/V):

2.0±0.002

Nonlinearity:

±0.017%FS

Creep(30min.):

±0.017%FS

Insulation Resistance:

≥5000M ohms

Temperature:

Compensated Range

-10℃~+40℃

Temp. Effect on Zero:

≤0.002%FS/℃

Zero Balance:

±1%FS

Hysteresis:

±0.017%FS

Input Resistance:

381±4 ohms

Excitation Voltage:

5~15V DC(20V MAX)

Temperature:

Operating Range

-40℃~+65℃

Temp. Effect on Output:

≤0.002%FS/℃

Safe Overload:

150%

Repeatability:

±0.01%FS

Output Resistance:

350±1 ohms

Material:

Alloy steel

Cable Length:

5m

IP Class:

IP65/IP67

Cable Color Code:

Green..... + EXC

Black..... - EXC

White..... + SIG

Red..... - SIG

Yellow..... + SEN

Blue..... - SEN

Dimensions

RATED CAPACITY	L	H	W	T	W1	H1	L1
kg/mm							
50~200	50.8	77	18.5	M10x1	9.3	38.5	17
300	50.8	77	24.4	M10x1	12.2	38.5	17
500	50.8	77	24.4	M12x1	12.2	38.5	17
1000	50.8	77	36	M12x1	18	38.5	17
2000	70	86	45	M16x1.5	8	43	17
3000	80	100	50	M18x1.5	8	50	17
5000	92	130	58	M20x2	8	65	17

Order Information

LOAD RATING	
STSC-50kg	STSC-100kg
STSC-200kg	STSC-300kg
STSC-500kg	STSC-1t
STSB-2t	STSB-3t
STSB-5t	

Interchangeable Products

MANUFACTURER	MODEL
METTLER TOLEDO	TSC/TSB