



CO kg 25000

Approvazione ATEX  II 1 G  II 2 D (zone 0-1-2-21-22) / ATEX approved (zone 0-1-2-21-22)

KIT_CO accessorio con due basi in acciaio inox (two stainless steel bases)

PIA_CO due piastre in acciaio speciale adatte unicamente per basi KIT_CO (two special steel plates suitable only for KIT_CO bases)



APPROVAZIONE OIML R60 C4

C4 OIML R60 C3 APPROVED



- ESECUZIONE IN ACCIAIO INOX 17-4 PH

- ERRORE COMBINATO $\leq \pm 0,017\%$

- GRADO DI PROTEZIONE IP 68

- PROTEZIONE ANTIFULMINE

- 17-4 PH STAINLESS STEEL CONSTRUCTION

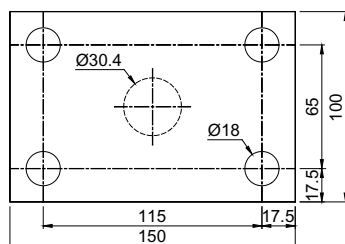
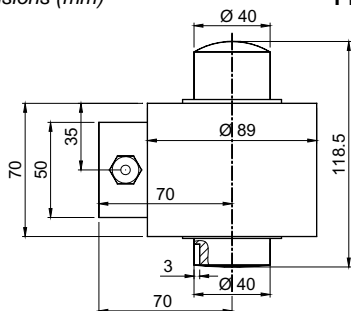
- COMBINED ERROR $\leq \pm 0.017\%$

- PROTECTION RATING IP 68

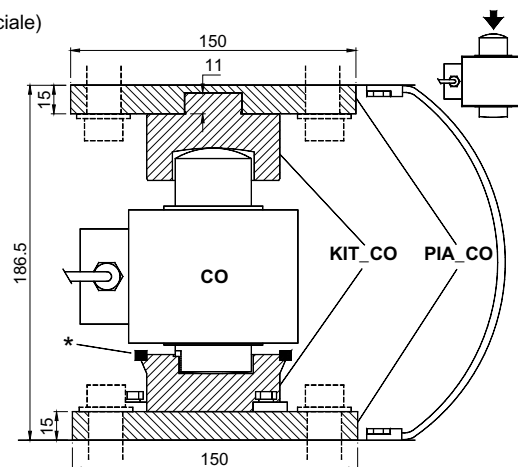
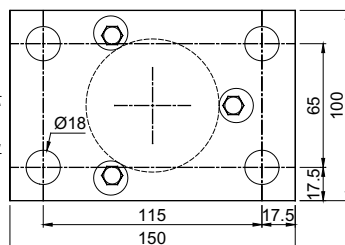
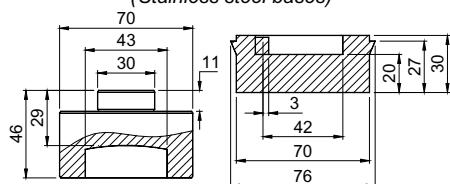
- LIGHTNING PROTECTION

Dimensions (mm)

PIA_CO (piastre super. e infer. in acciaio speciale)
(Special steel plates)



KIT_CO (basi superiore e infer. in acciaio inox)
(Stainless steel bases)



* Sistema antirotazione
(perno più O-ring)
Pin and O-ring for antirotation

CO weight = 2.4kg
KIT_CO weight = 1.8kg
PIA_CO weight = 3.4kg

CARATTERISTICHE TECNICHE

TECHNICAL FEATURES

SENSIBILITA' 2 mV/V +/- 0.1%
EFFETTO DELLA TEMPERATURA SULLO ZERO 0.002 % / °C
EFFETTO DELLA TEMPERATURA SUL FONDO SCALA 0.002 % / °C
COMPENSAZIONE TERMICA -10°C / +40°C
CAMPO DI TEMPERATURA DI LAVORO -30°C / +65°C
CREEP A CARICO NOMINALE DOPO 30 MINUTI 0.02 %
TENSIONE DI ALIMENTAZIONE MAX TOLLERATA 15 Volt
RESISTENZA D'INGRESSO 700 ohm +/- 7
RESISTENZA DI USCITA 700 ohm +/- 7
BILANCIAMENTO DI ZERO +/- 1 %
RESISTENZA D'ISOLAMENTO > 5000 Mohm
CARICO STATICO MASSIMO (% sul Fondo Scala) 150 %
CARICO DI ROTTURA (% sul Fondo Scala) > 300 %
DEFLESSIONE A CARICO NOMINALE 0.6 - 1 mm

2 mV/V +/- 0.1%
0.002 % / °C
0.002 % / °C
-10°C / +40°C
-30°C / +65°C
0.02 %
15 Volt
700 ohm +/- 7
700 ohm +/- 7
+/- 1 %
> 5000 Mohm
150 %
> 300 %
0.6 - 1 mm

RATED OUTPUT
TEMPERATURE EFFECT ON ZERO
TEMPERATURE EFFECT ON SPAN
COMPENSATED TEMPERATURE RANGE
OPERATING TEMPERATURE RANGE
CREEP AT NOMINAL LOAD AFTER 30 MINUTES
MAX SUPPLY VOLTAGE WITHOUT DAMAGE
INPUT RESISTANCE
OUTPUT RESISTANCE
ZERO BALANCE
INSULATION RESISTANCE
SAFE OVERLOAD (% of Full Scale)
ULTIMATE OVERLOAD (% of Full Scale)
DEFLECTION AT NOMINAL LOAD

CAVO

CABLE

LUNGHEZZA	15 m	LENGTH	
DIAMETRO	5 mm	DIAMETER	
FILI CONDUTTORI	4 x 0.24 mm ²	CORES	

