

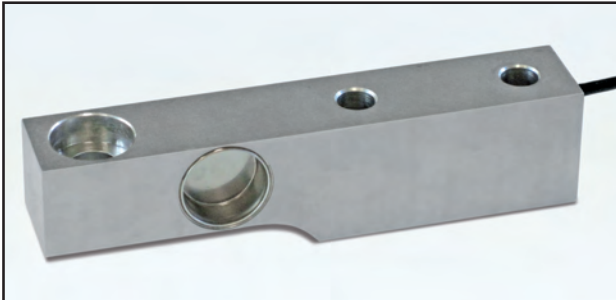
FTZA kg 500, 1000, 2000

FTZA kg 5000, 7500

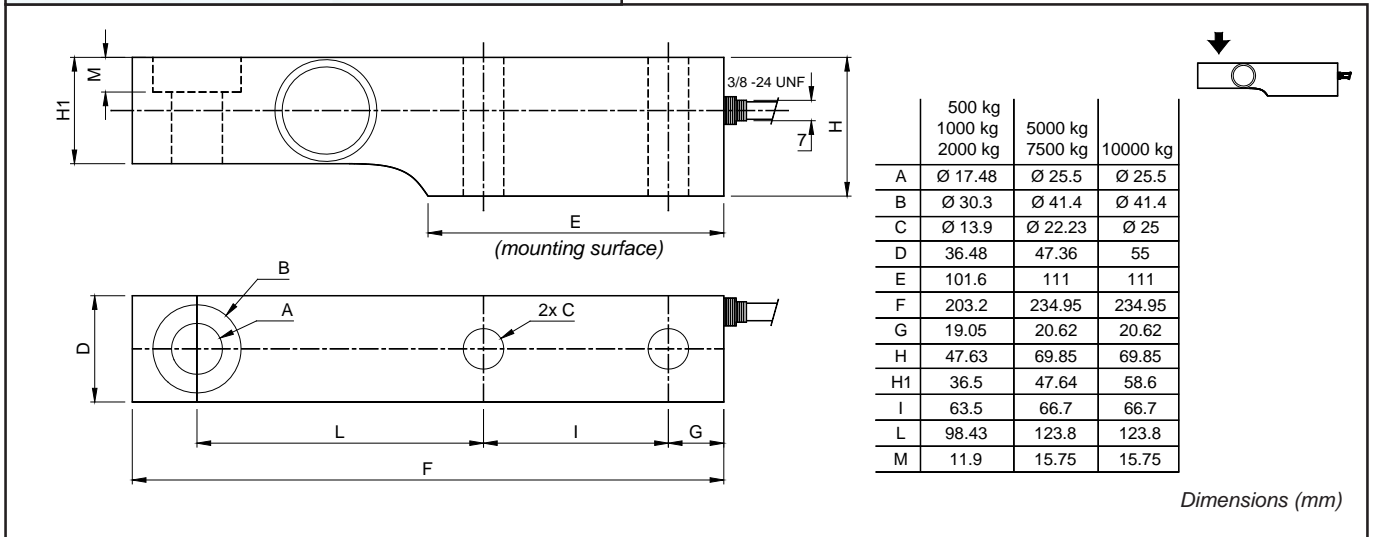
FTZA kg 10000

OIML C3 FTZA 5000 - 10000 kg: APPROVAZIONE OIML R60 C3
FTZA 5000 - 10000 kg: OIML R60 C3 APPROVED

OIML C4 FTZA 500 - 2000 kg: APPROVAZIONE OIML R60 C4
FTZA 500 - 2000 kg: OIML R60 C4 APPROVED



- ESECUZIONE IN ACCIAIO INOX 17-4 PH
- ERRORE COMBINATO $\leq \pm 0,017\%$ (0,013% C4)
- GRADO DI PROTEZIONE IP 68
- 17-4 PH STAINLESS STEEL CONSTRUCTION
- COMBINED ERROR $\leq \pm 0.017\%$ (0.013% C4)
- PROTECTION RATING IP 68



CARATTERISTICHE TECNICHE

TECHNICAL FEATURES

SENSIBILITA' 2 mV/V $\pm 0.4\%$
 EFFETTO DELLA TEMPERATURA SULLO ZERO 0.0018 % / °C
 EFFETTO DELLA TEMPERATURA SUL FONDO SCALA 0.0014 % / °C
 COMPENSAZIONE TERMICA - 10°C / + 40°C
 CAMPO DI TEMPERATURA DI LAVORO - 35°C / + 65°C
 CREEP A CARICO NOMINALE DOPO 30 MINUTI 0.02 %
 TENSIONE DI ALIMENTAZIONE MAX TOLLERATA 18 Volt
 RESISTENZA D'INGRESSO 350 ohm ± 3.5
 RESISTENZA DI USCITA 350 ohm ± 3.5
 BILANCIAMENTO DI ZERO $\pm 1\%$
 RESISTENZA D'ISOLAMENTO > 5000 Mohm
 CARICO STATICO MASSIMO (% sul Fondo Scala) 150 %
 CARICO DI ROTTURA (% sul Fondo Scala) > 300 %
 DEFLESSIONE A CARICO NOMINALE 0.4 mm

TEMPERATURE EFFECT ON ZERO 0.0018 % / °C
 TEMPERATURE EFFECT ON SPAN 0.0014 % / °C
 COMPENSATED TEMPERATURE RANGE - 10°C / + 40°C
 OPERATING TEMPERATURE RANGE - 35°C / + 65°C
 CREEP AT NOMINAL LOAD IN 30 MINUTES 0.02 %
 MAX SUPPLY VOLTAGE WITHOUT DAMAGE 18 Volt
 INPUT RESISTANCE 350 ohm ± 3.5
 OUTPUT RESISTANCE 350 ohm ± 3.5
 ZERO BALANCE $\pm 1\%$
 INSULATION RESISTANCE > 5000 Mohm
 SAFE OVERLOAD (% of Full Scale) 150 %
 ULTIMATE OVERLOAD (% of Full Scale) > 300 %
 DEFLECTION AT NOMINAL LOAD 0.4 mm

RATED OUTPUT
 TEMPERATURE EFFECT ON ZERO
 TEMPERATURE EFFECT ON SPAN
 COMPENSATED TEMPERATURE RANGE
 OPERATING TEMPERATURE RANGE
 CREEP AT NOMINAL LOAD IN 30 MINUTES
 MAX SUPPLY VOLTAGE WITHOUT DAMAGE
 INPUT RESISTANCE
 OUTPUT RESISTANCE
 ZERO BALANCE
 INSULATION RESISTANCE
 SAFE OVERLOAD (% of Full Scale)
 ULTIMATE OVERLOAD (% of Full Scale)
 DEFLECTION AT NOMINAL LOAD

CAVO

CABLE

| | | | |
|-----------------|--------------------------|----------|--------------------------|
| LUNGHEZZA | 5 m | LENGTH | 5 m |
| DIAMETRO | 5 mm | DIAMETER | 5 mm |
| FILI CONDUTTORI | 4 x 0.20 mm ² | CORES | 4 x 0.20 mm ² |

